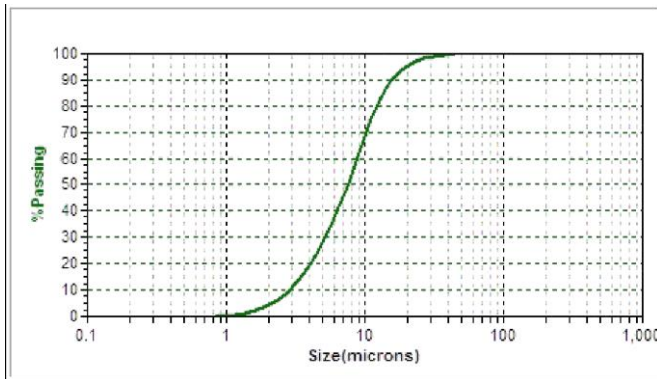


## Product Data Sheet



Laser particle distribution

**Grade:** Graphene GCR100

**Type:** Exfoliated micronized high purity graphene

**Specifications:**

Size..... 8-12 microns D50

Carbon..... 99.0% Min.

Moisture..... 0.50% Max.

**Typical Analysis:**

Carbon..... 99.90%

Ash..... 0.10%

Moisture..... 0.10%

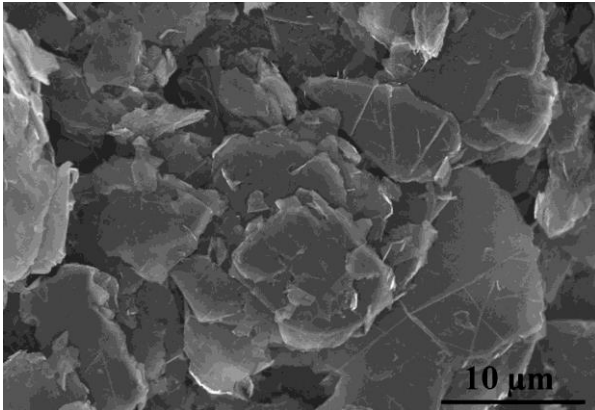
Size..... 99.90% -325 mesh (passing 44µm)  
Test method - jet sieve. U.S. standard

D10 3.0 µm

D50 9.5 µm

D90 25.0µm

Test method: Microtrac



Scanning electron micrograph

Rev: 2-23-20