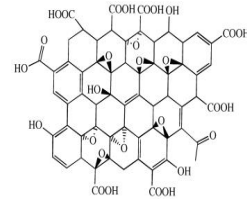


Product Datasheet

Graphene soluble grade GCR1000



Properties

Form	Dispersion of graphene oxide
Particle size (SEM)*	< 10µm
Color	Yellow-brown
Odor	Odorless
Dispersibility	Polar solvents
Solvents	Water
Concentration	4 mg/mL
pH	2,2-2,5
Monolayer content (measured in 0.5mg/mL)	>95%**

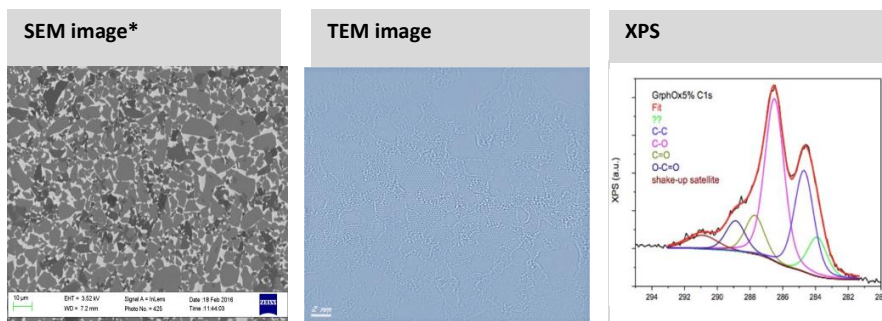
(*) This data was obtained by SEM image analysis.

(**) 4mg/ml concentration tends to agglomerate the GCR1000 flakes and dilution followed by slight sonication is required in order to obtain a higher percentage of monolayer flakes.

Elemental Analysis*

Carbon	49-56%
Hydrogen	1-2%
Nitrogen	0-1%
Sulfur	2-4%
Oxygen	41-50%

(*) Sample preparation: 2g of 4wt% GCR1000 in water were dried under vacuum at 60°C overnight.



Application example

Fiberglass / Glass Fiber CAS NO. 65997-17-3



NON COATED



COATED with GRAPHENE
Special soluble grade GCR1000