

REDUCED GRAPHENE OXIDE (rGO)



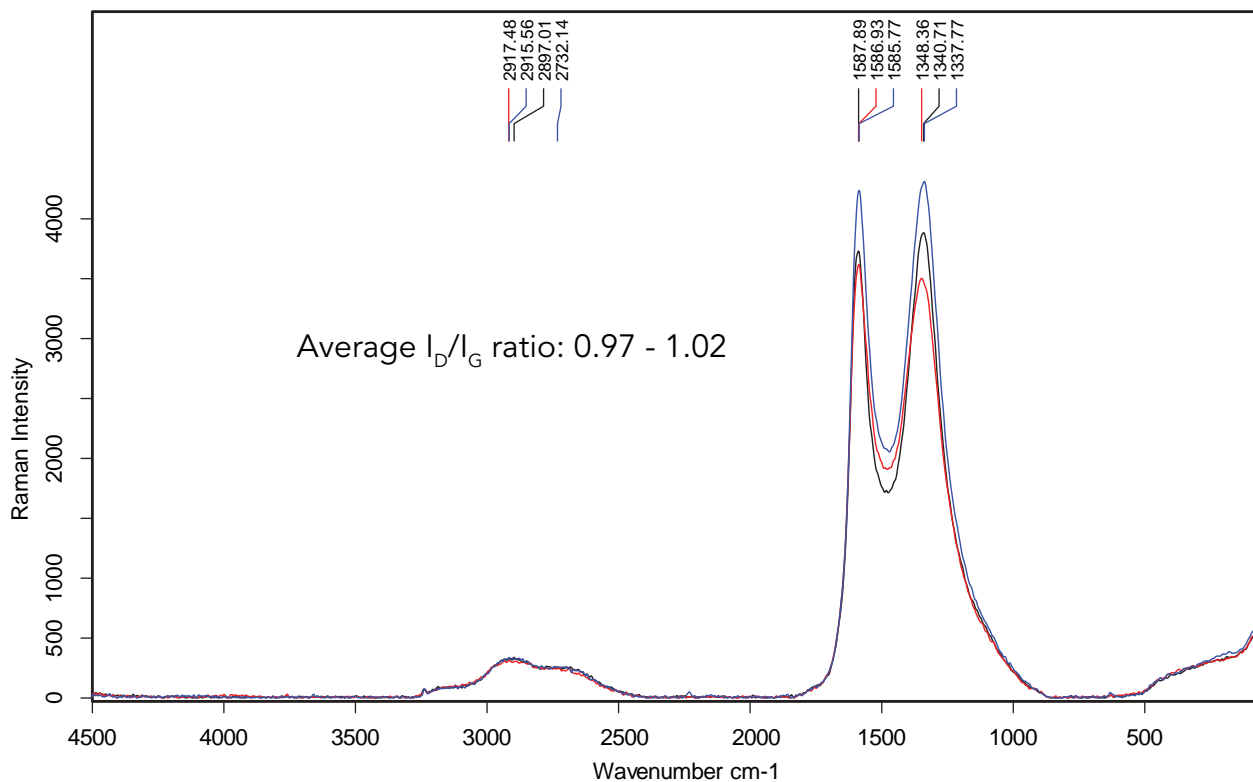
Start-up : Sri Lankan C99+ Vein Graphite, Particle size range: 63-125
 Graphite μm : Soft Black Powder Platelets
 Appearance : $5.9 \times 10^{-3} \text{ g/cm}^3$
 Tapped Density : $\sim 750 \pm 50 \text{ (m}^2/\text{g)}$
 BET Surface Area

C/O ratio: 19.0 - 19.5

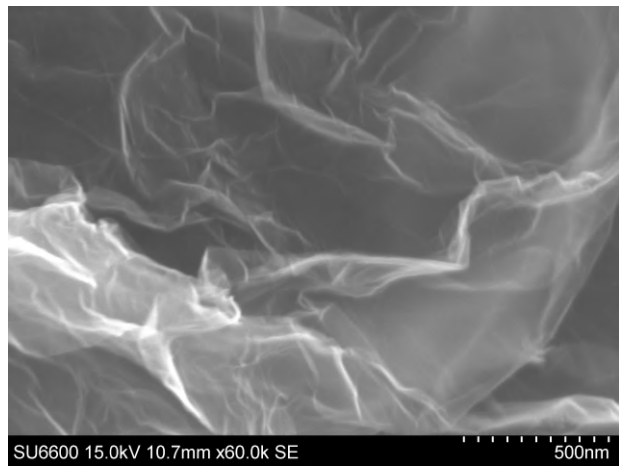
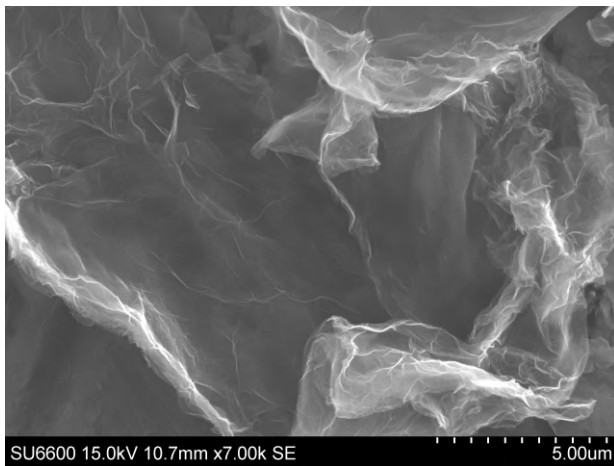
X-ray Photoelectron Spectroscopy (XPS)

Name	C1s	O1s	S2p	Si2p
Avg %	94.0 - 95.0	4.5 - 5.0	0 - 0.4	0 - 0.88

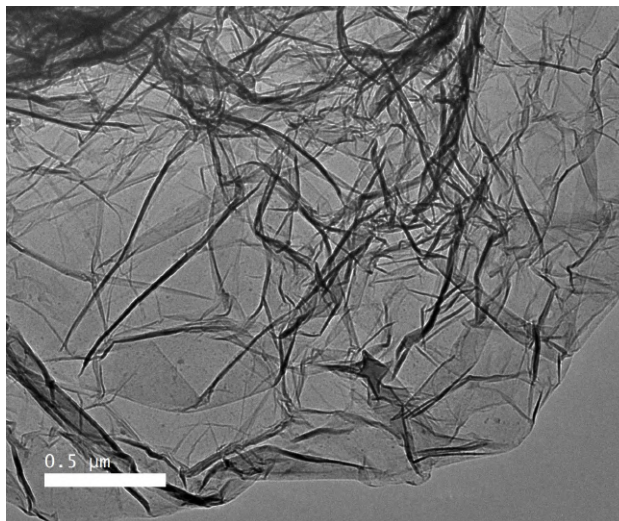
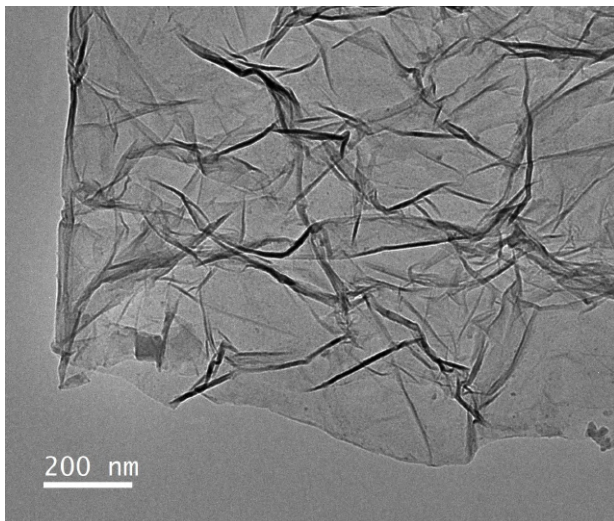
RAMAN Analysis



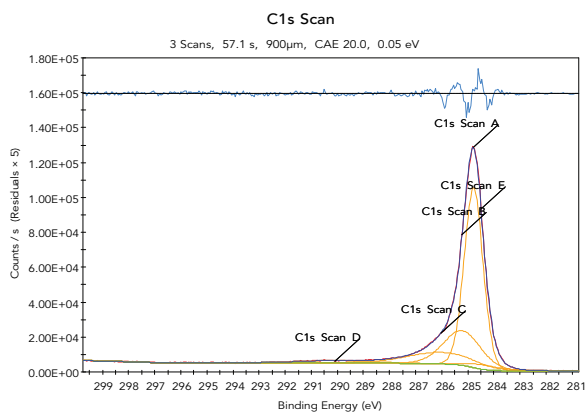
Scanning Electron Microscope (SEM)



Transmission Electron Microscope (TEM)



XPS Narrow Scan C1s



FTIR Analysis

